



# HSC-24P

## Cool Solutions by Airrex! Approved technology with 37 years experience in the market! Airrex Spot Cooler 2-Ton

Airrex spot coolers operate in air temperatures from 61°F to 115°F. These air conditioners utilize eco-friendly R-410A refrigerant.

Airrex spot cooler air conditioners may require a fresh air supply for proper operation. Includes removable, washable air filters for easy maintenance. Thermostatically protected compressor includes high and low pressure warnings. Moves easily on four swivel casters (2 locking). 23,500 BTU Cooling feature two 5" diameter front cold air discharge and 12" diameter top warm air discharge.

Optional Warm Air Duct includes ducting and a 2' x 2' ceiling flange for warm air exhausting.

ETL listed. Optional Condensate Pump that plugs directly into the portable air conditioner.

1 year warranty and 3 years on compressor.

### Strong Points



Quiet



Thermostats



Intensive Air Conditioning



Movable & Lockable



Energy saving



Automatic



Time Setting

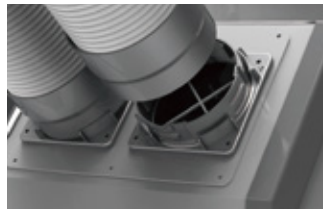


Certification



#### Hot Air Exhaust

Automatic Fan Speed Controller  
Operating Range : Up to 115°F



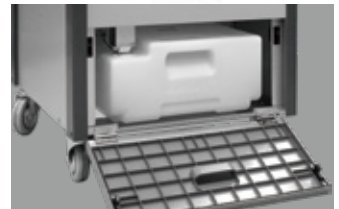
#### Twist & Lock

(2) 5"x14"  
Easy to disassemble & store



#### Mobility

(4) 4" Swivel Casters  
(2) Locking Casters



#### Condensate Tank

5 Gallon Tank Auto Shut off



#### Spot Cooling

Directed Cooling  
23,500Btu/h



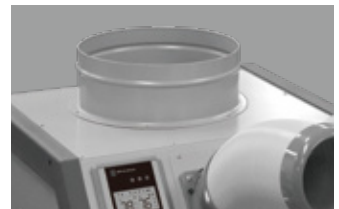
#### Digital Controls

Programmable Timer  
Temperature Range: 61°F to 86°F  
High/Low Fan Speed / Auto Restart



#### LCDI Protection

LCDI Recessed Power Cords  
Standard 220 Volt Power  
ETL Certified



#### Applications

Indoor or Outdoor  
Cooling Drying

# HSC-24P Specifications

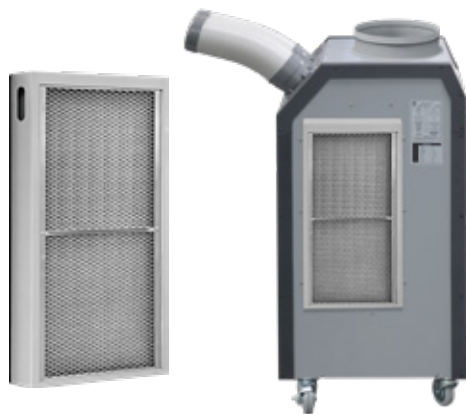


SPECIFICATIONS				Air-Cooled		Fans	Outdoor	Fan Type	-	Centrifugal
				HSC-24P				Air Volume (High/Low)	CFM	1,100 / 970
Capacity Rating Condition	Cooling	(35°C/95°F 40%)	Btu/h	23,500 Btu/h	Sound Level	With Exhaust Duct	High / Low	dB(A)	60 / 58	
	Heating	(21°C/70°F 50%)	Btu/h	-			Without Exhaust Duct	High / Low	dB(A)	62 / 60
	Dehu	Max. (32°C/89°F 80%)	gal/day	39				Type / Size	inch	Top Flange / 12" (Ø300)
Nominal (27°C/80°F 60%)		gal/day	24							
Electrical Characteristics	Voltage	60 Hz	Volts	1 Phase, 220 V~	Air Filter	Type		Indoor	-	Alu+SUS mesh
	Power Consumption	Cooling	kW	2.7		Outdoor	-	Alu+SUS mesh		
		Heating	kW	-	Condensate	Tank	Capacity	gal	5	
	Current	Cooling	A	12.7		Auto Pump	-	Optional		
		Heating	A	-	Refrigerant	Type	-	R-410A		
	Fuse Size		A	20	Weight	Net Weight	lbs	187		
Min. - Max. Voltage		v	187 - 242 V~	Dimensions	W x D x H	inch	22 x 25 x 49			
Power Cord	NEMA Plug		-	6 - 20	Operating Conditions	Min. - Max.	Cooling	°F	61~115 (16~46°C)	
	Gauge		-	12 AWG (3-core)			Heating	°F	-	
	Length		ft	10			Dehumidification	°F	55~115 (13~46°C)	
Fans	Indoor	Fan Type	-	Centrifugal	Safety Device	High Pressure Switch		○		
		Cooling Air Volume (High/Low)	CFM	460 / 410		Low Pressure Switch		○		
		Heating Air Volume	CFM	-		Compressor 3min, Delay Timer		○		
		Dehu Air Volume	CFM	430		Thermostat Protector for Compressor		○		
		Max. External Static Pressure	inchH2O	0,35		Fan Motor Protection		○		
		Max. Equivalent Duct Length	ft	40		Automatic Full Tank Shut-Off		○		
		Type / Size	inch	Duct / 5" (Ø125) x2		Tank Position Detector		○		

※ Designs and specifications of products are subject to change without prior notice for the improvements. The colors of products may be different due to the printing process.

## Hepa filter optional kit

Optional Filter kit ((A)HSC-14P/18P/24P)



## Ideal Applications for Airrex Portable Air Conditioner



### Industrial Sites

High temperature work sites, car manufacturing plants, ship building yards and steel mills

### Repair Shops

Car repair shops, aircraft workshops, farm machinery workshops, gas stations & parking facilities

### Heat Generating Equipment

Server rooms and machine rooms

### Leisure / Outdoor Event Venues, Farm, & Livestock Ranges

**Airrex USA** Office Mailing Address:

2031 Exchange Parkway, Waco, TX 76712

888-535-8841

[www.airrexusa.com](http://www.airrexusa.com)

[sales@airrexusa.com](mailto:sales@airrexusa.com)