

# OPERATING INSTRUCTIONS MANUAL

(Please retain for future reference)

## For FVO-750 INDIRECT FIRED SPACE HEATERS



**CERTIFIED FOR USE IN CANADA AND U.S.A.**  
As per CSA B140.8 Portable Oil Fired Heaters / CSA B140.02003 Oil Burning Equipment  
Construction Heaters Unattended Type.

Issue date July 1, 2012



**Intertek**  
2003325

**FLAGRO INDUSTRIES LIMITED**  
ST. CATHARINES, ONTARIO  
CANADA

**GENERAL HAZARD WARNING:**

**FAILURE TO COMPLY WITH THE PRECAUTIONS AND INSTRUCTIONS PROVIDED WITH THIS HEATER, CAN RESULT IN DEATH, SERIOUS BODILY INJURY AND PROPERTY LOSS OR DAMAGE FROM HAZARDS OF FIRE, EXPLOSION, BURN, ASPHYXIATION, CARBON MONOXIDE POISONING, AND/OR ELECTRICAL SHOCK.**

**ONLY PERSONS WHO CAN UNDERSTAND AND FOLLOW THE INSTRUCTIONS SHOULD USE OR SERVICE THIS HEATER.**

**IF YOU NEED ASSISTANCE OR HEATER INFORMATION SUCH AS AN INSTRUCTIONS MANUAL, LABELS, ETC. CONTACT THE MANUFACTURER.**

**WARNING:**

**FIRE, BURN, INHALATION, AND EXPLOSION HAZARD. KEEP SOLID COMBUSTIBLES, SUCH AS BUILDING MATERIALS, PAPER OR CARDBOARD, A SAFE DISTANCE AWAY FROM THE HEATER AS RECOMMENDED BY THE INSTRUCTIONS. NEVER USE THE HEATER IN SPACES WHICH DO OR MAY CONTAIN VOLATILE OR AIRBORNE COMBUSTIBLES, OR PRODUCTS SUCH AS GASOLINE, SOLVENTS, PAINT THINNER, DUST PARTICLES OR UNKNOWN CHEMICALS.**

**WARNING:**

**NOT FOR HOME OR RECREATIONAL VEHICLE USE.**

**WARNING:**

**INTENDED USE IS PRIMARILY THE TEMPORARY HEATING OF BUILDINGS UNDER CONSTRUCTION, ALTERATION, REPAIR OR EMERGENCIES ONLY.**

**This heater is designed and approved for use as a construction heater under CSA B140.8 Portable Oil Fired Heaters / CSA B140.02003 Oil Burning Equipment.**

**We cannot anticipate every use which may be made of our heaters. CHECK WITH YOU LOCAL FIRE SAFETY AUTHORITY IF YOU HAVE QUESTIONS ABOUT APPLICATIONS.**

**Other standards govern the use of fuel gases and heat producing products in specific applications. Your local authority can advise you about these.**

### **SPECIFICATIONS**

|                        |                                       |
|------------------------|---------------------------------------|
| Model .....            | FVO-750                               |
| Input .....            | 750,000 btuh                          |
| Fuel .....             | No.1, No. 2,<br>Diesel or<br>Kerosene |
| Fuel Pressure .....    | 160 psi                               |
| Nozzle .....           | 4.50 x 60W<br>(Delavan)               |
| Ignition .....         | Direct Spark                          |
| .....                  | Thermostat<br>Control                 |
| Air Circulation .....  | 7000 cfm                              |
| Fuel Consumption ..... | 5.42 Gal/hr                           |
| Approved .....         | cETLus listed                         |

## INSTALLATION:

The installation of this heater for use with No.1, No.2, Diesel or Kerosene and shall conform with local codes or, in the absence of codes, with the National Fuel Gas Code ANSI Z223.1/NFPA 54. Installation of the unit shall be in accordance with the regulations of the authorities having jurisdiction or the CSA Standard B139.

### CLEARANCE TO COMBUSTIBLES:

| <u>TOP</u> | <u>FRONT</u> | <u>SIDES</u> | <u>REAR</u> | <u>FLUE PIPE</u> |
|------------|--------------|--------------|-------------|------------------|
| 1 ft       | 1 ft         | 1 ft         | 2 ft        | 2 ft             |

**FUEL:** This heater will operate with No.1, No.2, Diesel or Kerosene.  
**Note:** No.1 Fuel Oil or Kerosene must be used for temperatures less than  $-10^{\circ}$  C ( $8^{\circ}$  F).

### ELECTRICAL:

This appliance is equipped with a grounded receptacle for your protection against shock hazard and should be plugged directly into a properly grounded plug. The electrical grounding of the heater shall be in compliance with the National Electrical Code, ANSI/NFPA 70, or CSA C22.1, Canadian Electrical Code, Part I.

**THIS APPLIANCE WILL OPERATE WITH 1 PHASE OR 3 PHASE POWER.  
208V-230V SUPPLY MUST BE AVAILABLE.**

### POWER SUPPLY:

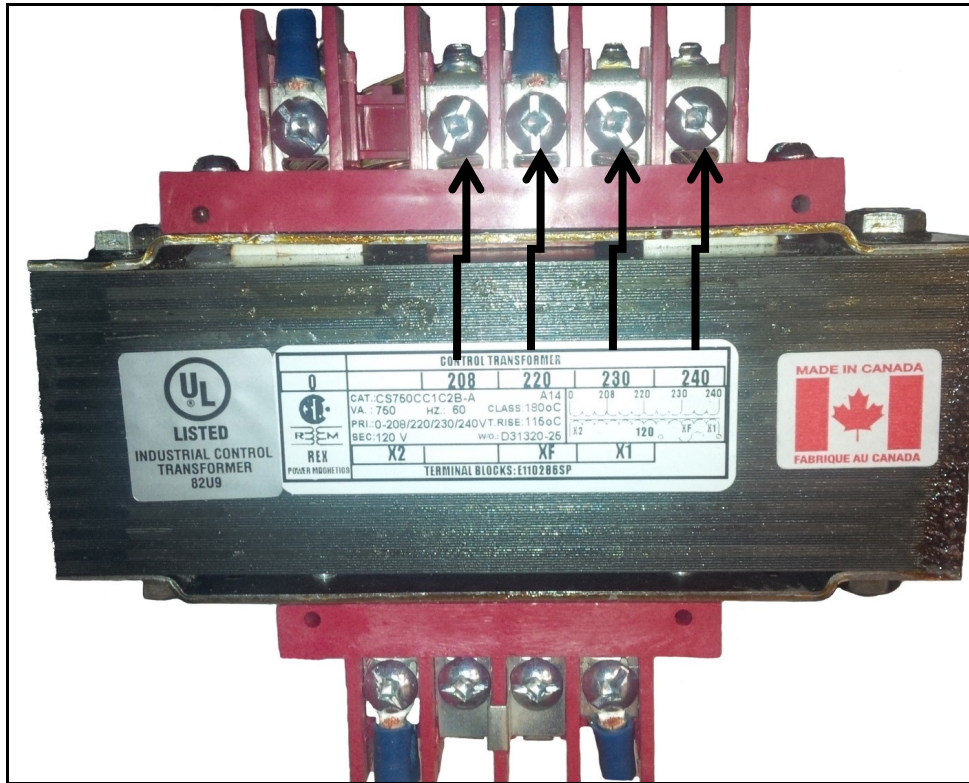
**SINGLE PHASE: 208V-230V, 30AMP BREAKER OR 30 AMP TIME DELAY  
FUSE, 8/3 AWG AT 100FT MAX.  
OR**

**THREE PHASE: 208V-230V, 25AMP BREAKER OR 25AMP TIME DELAY  
FUSE, 10/4 AWG AT 100FT MAX.**

**\*\*POWER CORD PLUG ENDS PROVIDED WITH UNIT FOR 1 PHASE OR 3  
PHASE OPERATION**

This heater is equipped with a VFD "Variable Frequency Drive" to control the primary fan acceleration & de-acceleration. The VFD has been password protected to prevent improper use. If access to VFD controls is required for troubleshooting, please contact manufacture for assistance.

INPUT CONNECTIONS



**TRANSFORMER OFFERS 4 DIFFERENT INPUT POWER SUPPLY OPTIONS  
FACTORY SET AT 220V.**

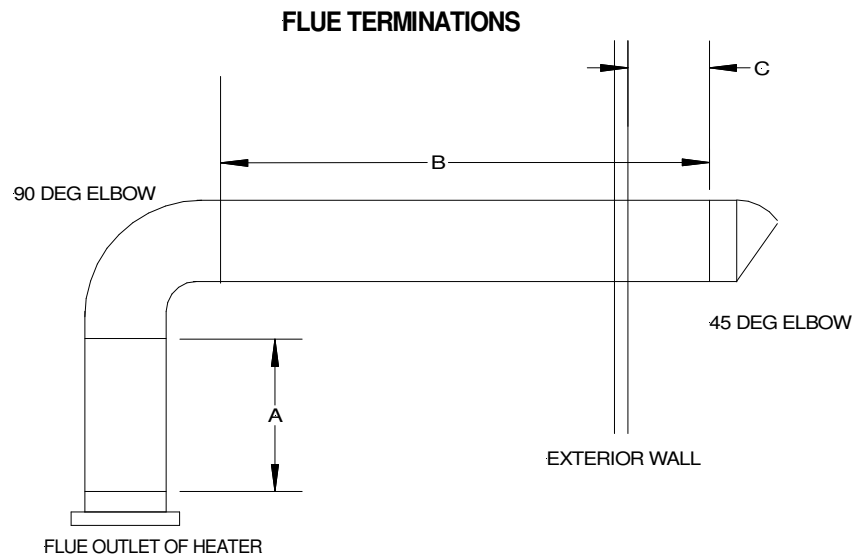
**IT IS IMPORTANT TO CHANGE YOUR INPUT CONNECTION BASED ON YOUR  
POWER SUPPLY, AS THE BURNER WILL NOT OPERATE PROPERLY**

**FLUE PIPE:**

For outdoor applications the flue pipe connection must terminate with a vertical run of at least 2ft complete with rain cap.

For indoor installations the venting must consist of a minimum 2ft vertical run to a maximum of 20ft total vent length. See diagram below for horizontal vent installation.

The vent outlet on the heater is 8" diameter. Certified venting must be used at all times. Vent cap must be installed in situations where downdrafts occur. All venting must correspond with the CSA B149 standard or in its absence, local codes.



A - Vertical vent run must be a minimum of 2ft from heater outlet.

B - Maximum horizontal run is 20ft  
Note: 90deg Elbow = 5ft

C - Vent termination in horizontal position must be minimum 2ft from wall.  
A 45deg elbow is recommended at horizontal termination.

Note: Horizontal flue run - Rise ratio 1:10.

**DUCTING:** Heater duct with a minimum temperature rating of 300 deg F including wire reinforcement to prevent collapsing. Heater is designed for use with 2 x 16" diameter ducts equipped with gear clamp couplings (FV-HDG16).

Install ducting to the heater outlet using gear clamps provided on the collar of the ducting. Ducting should be inspected periodically for tearing and/or wear marks. Ducting should be stored in a dry area when not in use

**MAINTENANCE:**

1. **Every construction heater should be inspected before each use, and at least annually by a qualified service person. Incorrect maintenance may result in improper operation of the heater and serious injury could occur.**
2. Service and Maintenance only to be performed by a qualified service person.
3. The hose assemblies shall be visually inspected prior to each use of the heater. If it is evident there is excessive abrasion or wear, or the hose is cut, it must be replaced prior to the heater being put into operation. The replacement hose assembly shall be that specified by the manufacturer.
4. The flow of combustion and ventilation air must not be obstructed. Be sure to check the fan assembly and ensure that the motor and blade are operating properly.
5. Compressed air should be used to keep components free of dust and dirt build up. Note: Do not use the compressed air inside any piping or regulator components.
6. Change fuel filter insert (Part# FVO-TLSF) once per year.
7. Change oil nozzle (Part# FV-738) once per year.
8. High Limit Switches (Part# FV-706 & FV-707) should be checked each season. These limit switches will ensure the burner shuts down if the temperature exceeds 200° F at rear of unit and 250° F at the outlet.
9. Heat Exchanger should be cleaned if smokey conditions continue even after the air adjustments on the burner are made.

## **START UP INSTRUCTIONS:**

1. Position heater properly & on a level surface before operating
2. Connect Fuel supply to heater
3. Ensure the (Thermostat / Manual) selector switch is in the “OFF” position
4. Attach power supply, 208-230V/1-phase or 208-230V/3-phase to appropriate receptacle.
5. Turn disconnect switch (Single or Three phase) depending on power supply to “ON” position.
6. Move switch to “MANUAL” position for manual control.

**“OR”**

7. Move switch to “THERMOSTAT” position for thermostatic control.

### **Please Note:**

1. If using Thermostat kit, the heater must be started in Thermostat position.
2. When changing between manual and thermostat operation, the heater must be left in the “OFF” position until blower fan completely shuts down before changing position to prevent the burner from locking out.
3. When using a generator for electrical supply, make sure the generator is properly grounded and is at a 60Hz frequency.
4. In the event that a Generator is being used and runs out of fuel, make sure the heater switch is in the “OFF” position before restarting generator, failure to do so may damage heater.



## **TO SHUT DOWN:**

1. Close main fuel supply valve
2. Move Thermostat/Manual switch to "OFF" position.
3. Waiting until blower fan shuts down (3 minutes approx.)
4. Turn Disconnect switch (single phase or three phase) depending on power supply to "OFF" position.
5. Turn main power breaker to "OFF" position
6. Disconnect heater from fuel supply.

## **IF HEATER FAILS TO START:**

1. Press manual reset button at rear of burner.
2. Check fuel level. There must be 6-8 gallons of fuel in the tank for the heater to start properly.
3. Make sure there are no air locks in fuel lines or filter.
4. Ensure proper power supply is being used.
5. Check for dirty fuel filter or blocked fuel supply line.
6. Check burner nozzle assembly.

**NOTE: IF THE BURNER HAS BEEN RESET SEVERAL TIMES THERE MAY BE AN ACCUMULATION OF OIL IN THE CHAMBER! DO NOT CONTINUE TO TRY AND START THE HEATER!**

**DRAIN OIL FROM HEAT EXCHANGER USING DRAIN HOLE AT FRONT OF HEAT EXCHANGER FOR 15-20 MINUTES BEFORE ATTEMPTING TO RELIGHT. LET REMAINING EXCESS OIL BURN OFF BEFORE CHECKING COMBUSTION OF UNIT.**

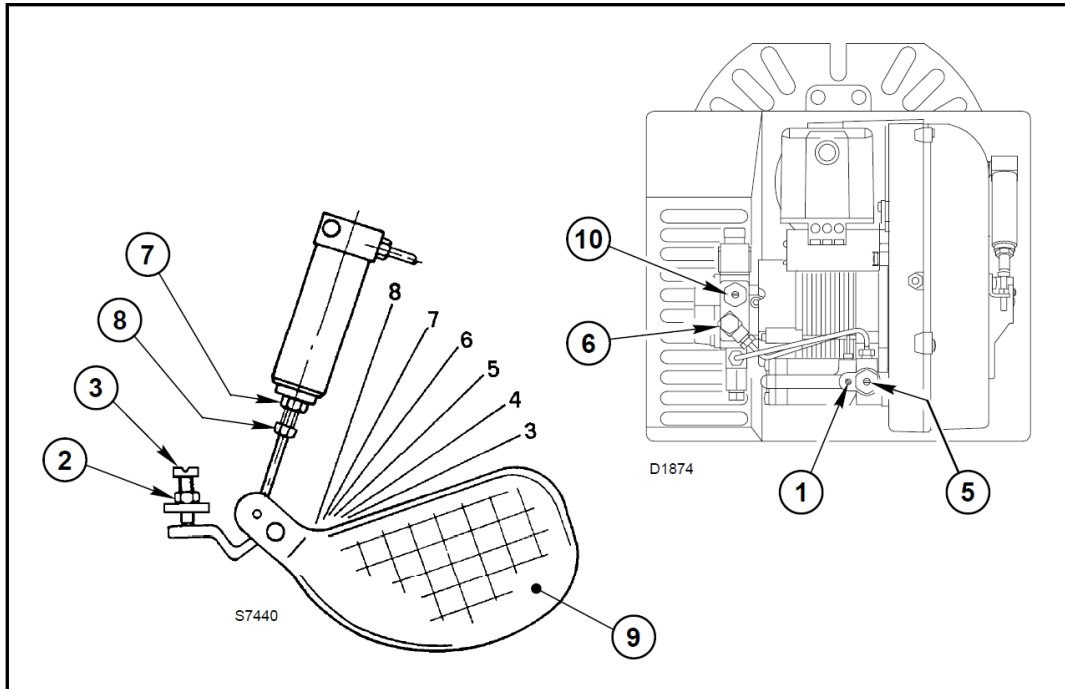
## SAFE OPERATION PRECAUTIONS:

1. Do not fill external fuel tank while heater is in operation.
2. Do not attempt to start heater if excess oil remains in the heat exchanger.
3. Use selector switch to shut down the heater.  
Do not try to shut down the heater by unplugging the electrical cord.  
Note: **DAMAGE TO THE HEATER WILL OCCUR**
4. Do not plug anything other than the thermostat into the "Thermostat" plug.
5. Do not use any fuel other than those listed on rating plate.
6. Follow electrical requirements shown on rating plate and/or Electrical requirements section of this manual.
7. Before removing any guards or performing any maintenance, be sure that the main power supply is disconnected.
8. All external fuel supply tanks must include a vent.

## COMBUSTION AIR ADJUSTMENTS:

NOTE: Proper combustion air adjustment must be achieved using a certified combustion analyzer and smoke tester to ensure complete combustion.

The air adjustment should be made to achieve 10% CO<sub>2</sub> and No. 1 or "trace" smoke. (Bacharach Scale)



### AIR SHUTTER SETTING LOW FIRE SETTING

- A) Loosen PRESSURE RELEASING SCREW (1). (One turn is sufficient). This permits the fuel pressure to bleed off to the pump return port and the burner to operate continuously at the low fire rate.
- B) Loosen RETAINING NUT (2).
- C) Turn the ADJUSTING SCREW (3) until the top of the air shutter (9) is correctly positioned according to the Burner Set-up Chart.
- D) Use instruments to establish the proper settings for maximum CO<sub>2</sub> and a smoke reading of zero.
- E) Hold ADJUSTING SCREW (3) in position and secure by tightening RETAINING NUT (2).

**F)** Retighten PRESSURE RELEASE SCREW (1).

**Note:** The low fire pressure regulator is pre-set at the factory to 100 PSI (7 bar). To vary or regulate this pressure it is necessary to attach a pressure gauge to the PRESSURE PORT (6). Loosen the PRESSURE RELEASE SCREW (1) as in step A above. Regulate the pressure by turning the PRESSURE REGULATING SCREW (5). The corresponding pressure can be read on the pressure gauge attached to the PUMP PRESSURE PORT (6).

## **MAIN FLAME SETTING**

**A)** Be sure that the burner is operating at high fire.

**B)** Set the pump pressure by attaching a pressure gauge to the Pressure port (6) and adjust the pressure by turning the pressure regulator adjustment screw (10).

Loosen the RETAINING NUT (7), and turn the BOLT (8) in a counterclockwise direction until about 3/4 of an inch of thread is visible. Using the setting taken from the Burner Set-up Chart, column 5, position the air shutter (9) so that the top of the shutter is aligned with the proper index line indicated on the air intake side of the burner housing. Holding the shutter in this position, turn ADJUSTING BOLT (8) in a clockwise direction until a resistance is met.

**C)** The final position of the air adjustment plate will vary on each installation. Use instruments to establish the proper settings for maximum CO<sub>2</sub> and a smoke reading of zero.

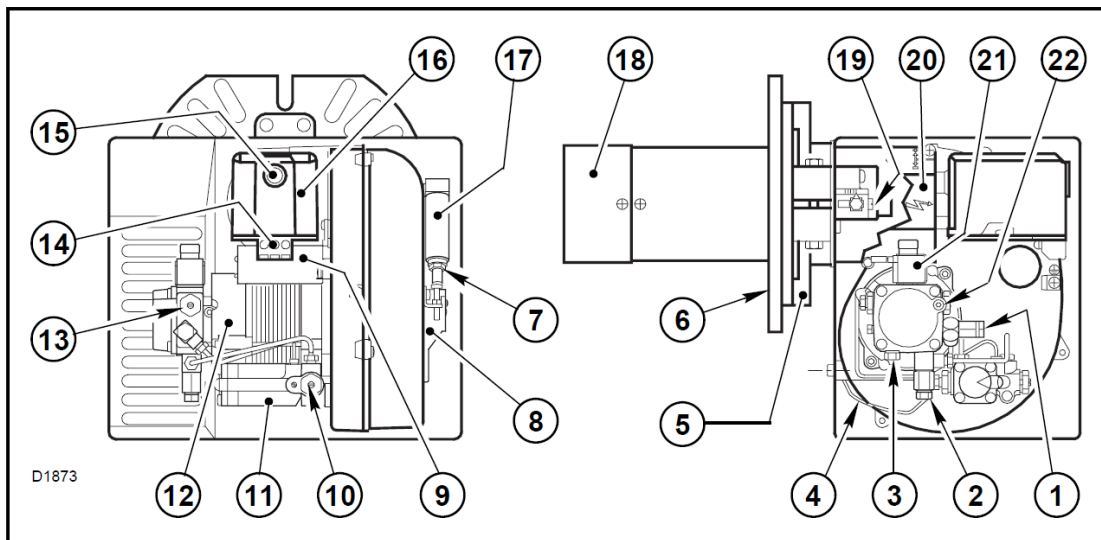
**NOTE:** Variations in flue gas, smoke, CO<sub>2</sub> and temperature readings may be experienced when the burner cover is put in place. Therefore, the burner cover **must** be in place when making the final combustion instrument readings, to ensure proper test.

# BURNER SET-UP CHART

| 1                                  | 2                  | 3                    |            | 4                         | 5                         |
|------------------------------------|--------------------|----------------------|------------|---------------------------|---------------------------|
| <b>ACTUAL FIRING RATE<br/>± 5%</b> | <b>NOZZLE SIZE</b> | <b>PUMP PRESSURE</b> |            | <b>TURBULATOR SETTING</b> | <b>AIR DAMPER SETTING</b> |
| <b>GPH</b>                         | <b>GPH</b>         | <b>PSI</b>           | <b>BAR</b> |                           |                           |
| 5.42                               | 4.50 x 60°W        | 160                  | 11         | 5                         | 5                         |

\* Note – Air damper setting is typically set at 5 for operation in colder temperatures. A combustion analyzer should always be used when setting the burner.

## OIL BURNER COMPONENTS IDENTIFICATION RIELLO 40 SERIES



### F20 BURNER COMPONENTS


- |   |  |
|---|--|
| 1. Pressure gauge connection port           | 13. Pump pressure regulator adjustment screw |
| 2. Return fuel line port                    | 14. Primary control sub-base                 |
| 3. Inlet fuel line port                     | 15. Lockout indicator lamp and Reset button  |
| 4. Capillary tube                           | 16. Primary control                          |
| 5. Adjustable collar                        | 17. Hydraulic jack                           |
| 6. Mounting flange with gasket              | 18. End cone                                 |
| 7. Air adjustment fixing screws             | 19. Turbulator adjustment screw              |
| 8. Hydraulic air shutter                    | 20. Air tube cover                           |
| 9. Capacitor                                | 21. Coil                                     |
| 10. Fuel pressure adjustment screw Low fire | 22. Vacuum gauge connection port             |
| 11. Hydraulic delay valve Low fire start    |  |
| 12. Motor                                   |  |

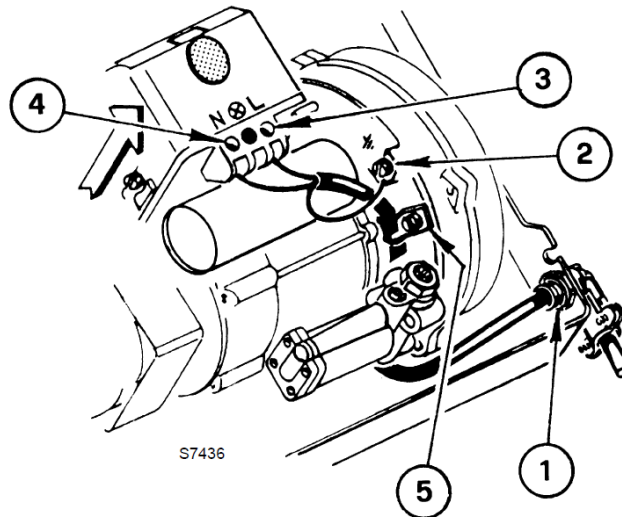
## ELECTRICAL CONNECTIONS

It is advisable to leave the control box off the sub-base while completing the electrical connections to the burner.

- 1) Wire access hole  
(Use BX electrical connector)
- 2) Earth ground conductor terminal  
(GREEN WIRE)
- 3) Hot conductor terminal  
(BLACK WIRE)
- 4) Neutral conductor terminal  
(WHITE WIRE)
- 5) Strain relief clamp

**WARNING:** The hot (black) wire must be connected to the L terminal and the neutral (white) wire must be connected to the N terminal or the primary safety control will be damaged.

Do not connect either wire to the  Terminal.

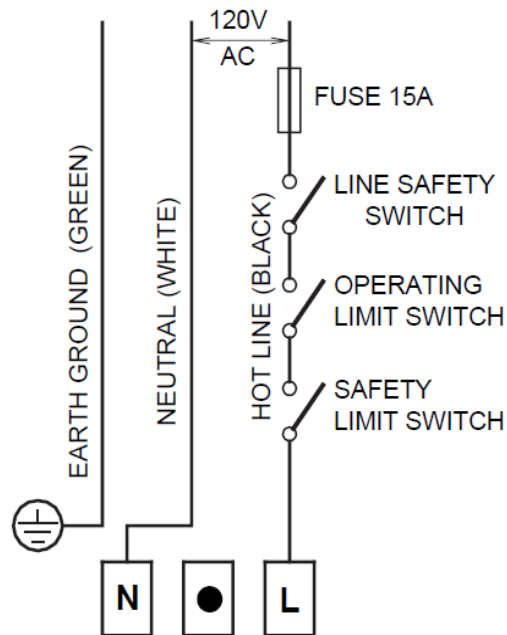


Using the appropriate diagram below, make electrical connections to the burner. All wiring must be done in accordance with existing electrical codes, both national and local.

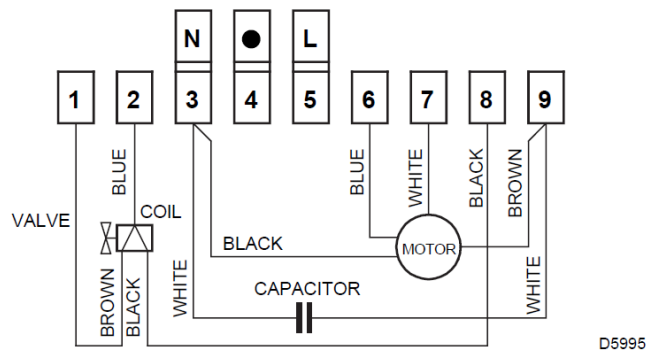
When all electrical connections have been made, the control box may be put back in place on the sub-base.

**WARNING: DO NOT activate burner until proper oil line connections have been made, or failure of the pump shaft seal may occur.**

## DIRECT LINE VOLTAGE



## FACTORY WIRED SUB-BASE

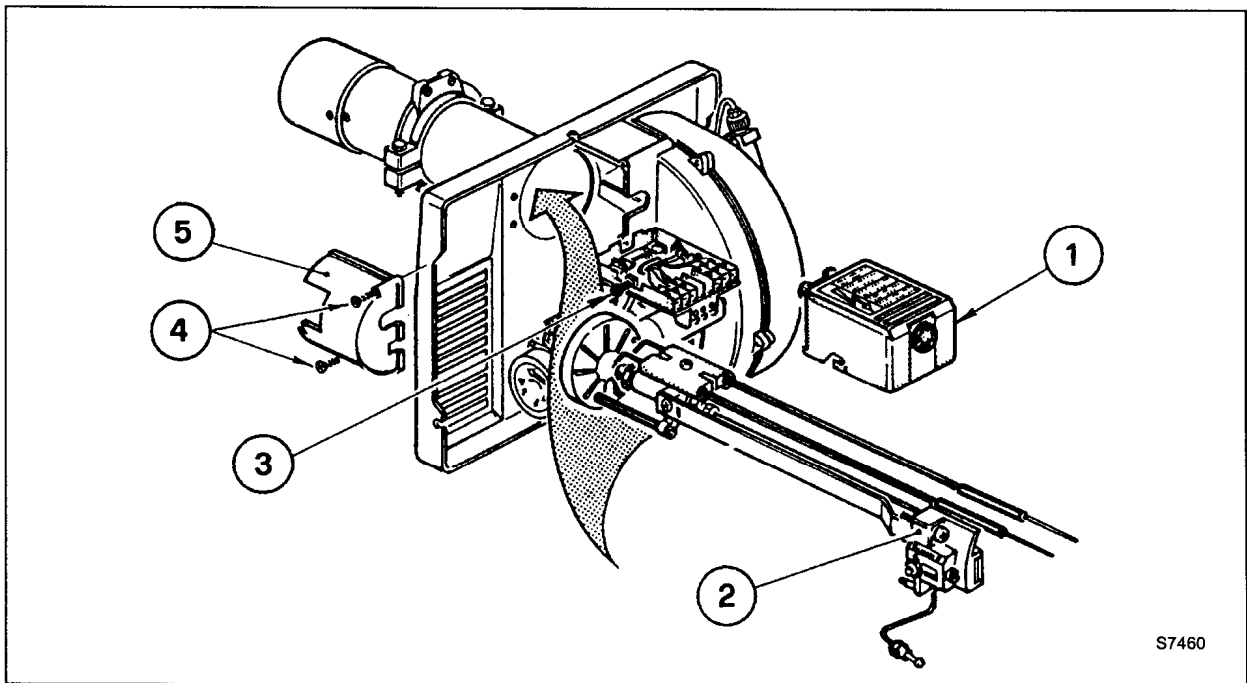


**REMOTE SENSING OF SAFETY LOCKOUT:** The SAFETY SWITCH in the 530SE CONTROL BOX is equipped with a contact allowing remote sensing of burner lockout. The electrical connection is made at terminal 4 (●) on the SUB-BASE. Should lockout occur the 530SE CONTROL BOX will supply a power source of 120Vac to the connection terminal. The maximum allowable current draw on this terminal (4) is 1 Amp.

**WARNING:** If a neutral or ground lead is attached to this terminal, the CONTROL BOX on the burner will be damaged should lockout occur.

## INSERTION / REMOVAL OF DRAWER ASSEMBLY

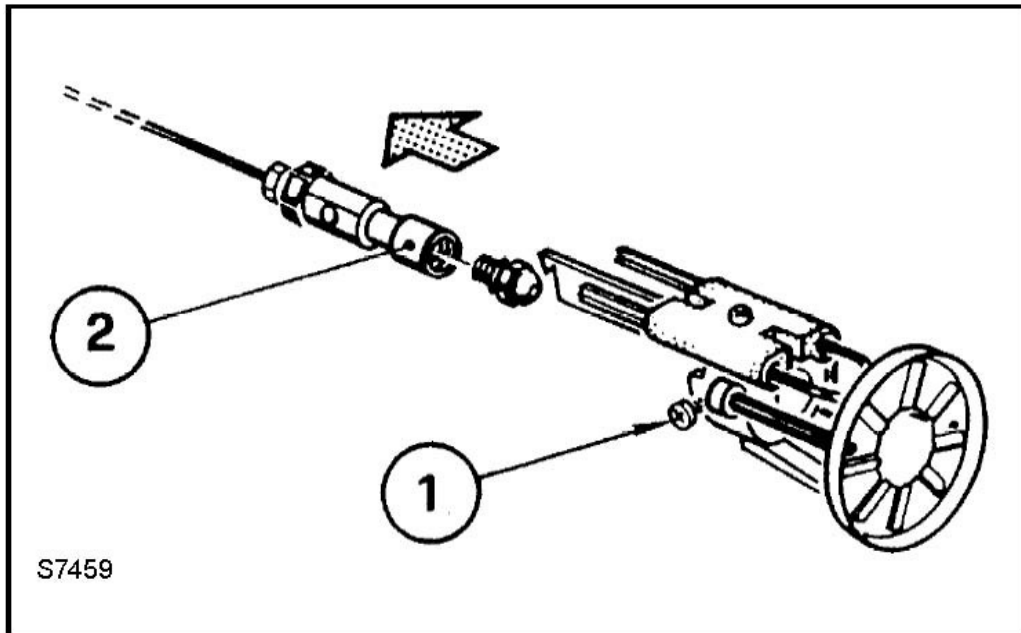
- A)** To remove drawer assembly, loosen SCREW (3), then unplug CONTROL BOX (1) by carefully pulling it back and then up.
- B)** Remove the AIR TUBE COVER PLATE (5) by loosening the two retaining SCREWS (4).
- C)** Loosen SCREW (2), and then slide the complete drawer assembly out of the combustion head as shown.
- D)** To insert drawer assembly, reverse the procedure in items A to C above, and then attach fuel line to the pump.





## NOZZLE PLACEMENT

- A) Remove the NOZZLE ADAPTER (2) from the DRAWER ASSEMBLY by loosening the SCREW (1).

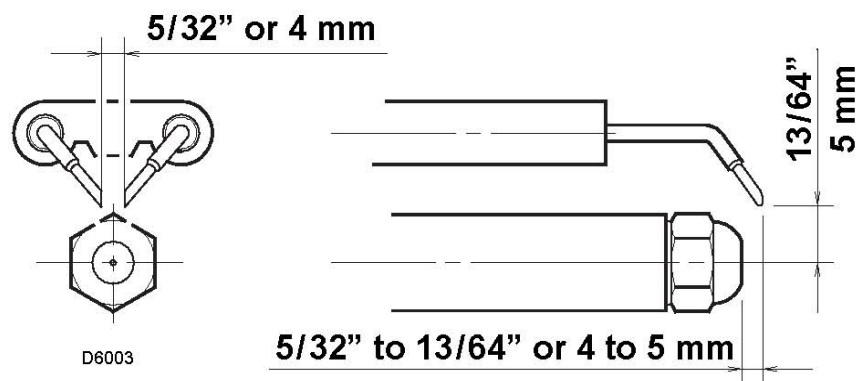


- B) Insert the proper NOZZLE into the NOZZLE ADAPTER and tighten securely (Do not over tighten).
- C) Replace adapter, with nozzle installed, into drawer assembly and secure with screw (1).

## ELECTRODE SETTING

### IMPORTANT:

THESE DIMENSIONS MUST BE OBSERVED AND VERIFIED.





## FV-750– PARTS LIST

**BOLT ON HINGE**



**FV-726**

**REAR DOOR LATCH**



**FV-725**

**HIGH LIMIT**



**FV-706 – 250F  
FV-707 – 200F**

**THERMOSTAT**



**FV-414B**

**GREEN LIGHT**



**S-1020C**

**RED LIGHT**



**S-1020B**

**3 POSITION SWITCH**



**FV-712**

**ON/OFF POWER SWITCH  
3 PHASE & 1 PHASE**



**FV-731 – 3 PHASE  
FV-732 – 1 PHASE**

**3 PHASE & 1 PHASE  
RECEPTACLE**



**FV-730 – 1 PHASE  
FV-730A - COVER  
FV-729 – 3 PHASE**

## FV-750 PARTS LIST

**3 PHASE/1 PHASE PLUG END**



**FV-727 – 3 PHASE  
FV-728 – 1 PHASE**

**15 H.P. VFD**



**FV-703**

**750V TRANSFORMER**



**FV-704**

**POWER RELAY**



**FV-734 – POWER RELAY**

**15 AMP BREAKER**



**FV-722**

**6AMP FUSE/2 POLE CLASS  
CC FUSE HOLDER**



**FV-708 – 6 AMP FUSE  
FV-709 – 2 POLE HOLDER**

**CONTACTORS/BLOCK**



**FV-720 – 7.5 HP contactor (2 BASE)**

**FV-721 - AUXILIARY CONTACT  
BLOCK ( TOP RIGHT SIDE)**

**GROUND LUG**



**FV-714**

## FV-750 PARTS LIST

**7.5 H.P. FAN MOTOR**



**FV-701**

**BLOWER ASSEMBLY**



**FV-702**

## FV-750 BURNER PARTS LIST - OIL

**IGNITION CONTROL**



**FV0-C700-1029**

**PHOTO CELL**



**FV0-20132573**

**FUEL PUMP**



**FV0-20062453**

**FAN MOTOR**



**FV-3005845**

**ELECTRODE ASSEMBLY**



**FV0-3005903**

**OIL NOZZLE**



**FV-733 ( 4.50 X 60W)**

### COIL



FVO-3002279

### TIGER LOOP SYSTEM

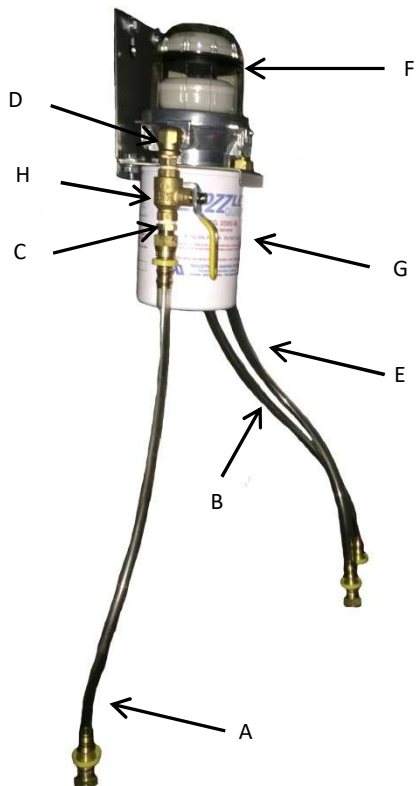


FVO-TLSF

### BURNER COVER



FV-20137281- OIL



### DIESEL FILTER SYSTEM

- |                |                             |
|----------------|-----------------------------|
| A – FVO-735    | FUEL SUPPLY TO TIGER LOOP   |
| B – FVO-738    | FUEL RETURN LINE            |
| C – 48-6C      | BRASS FITTING               |
| D – 49-6C      | ELBOW                       |
| E – FVO-737    | FUEL LINE, FILTER TO BURNER |
| F – FVO-734    | TIGER LOOP                  |
| G – FVO-TLSF   | FILTER                      |
| H – 2103-C-CGA | SHUT OFF VALVE              |

## FV-750 BURNER PARTS LIST – LP/NG

**ELECTRODE**



**FVNP-3006962**

**FLAME ROD**



**FVNP-3020210**

**AIR PRESSURE SWITCH**



**FVNP-3020321**

**BURNER ORIFICE**



**FVNP-3006703**

**BURNER COVER**



**FV-20137281-LPNG**

**BURNER MOTOR**



**FV-3005845**

**IONIZATION LEAD**



**FVNP-3007310**

**IGNITION MODULE**



**FVNP-3013072**

**GAS SELECTOR VALVE**



**2103-F-CGA (1")**

**ON/OFF VALVE**



**2103-E-CGA (3/4")**

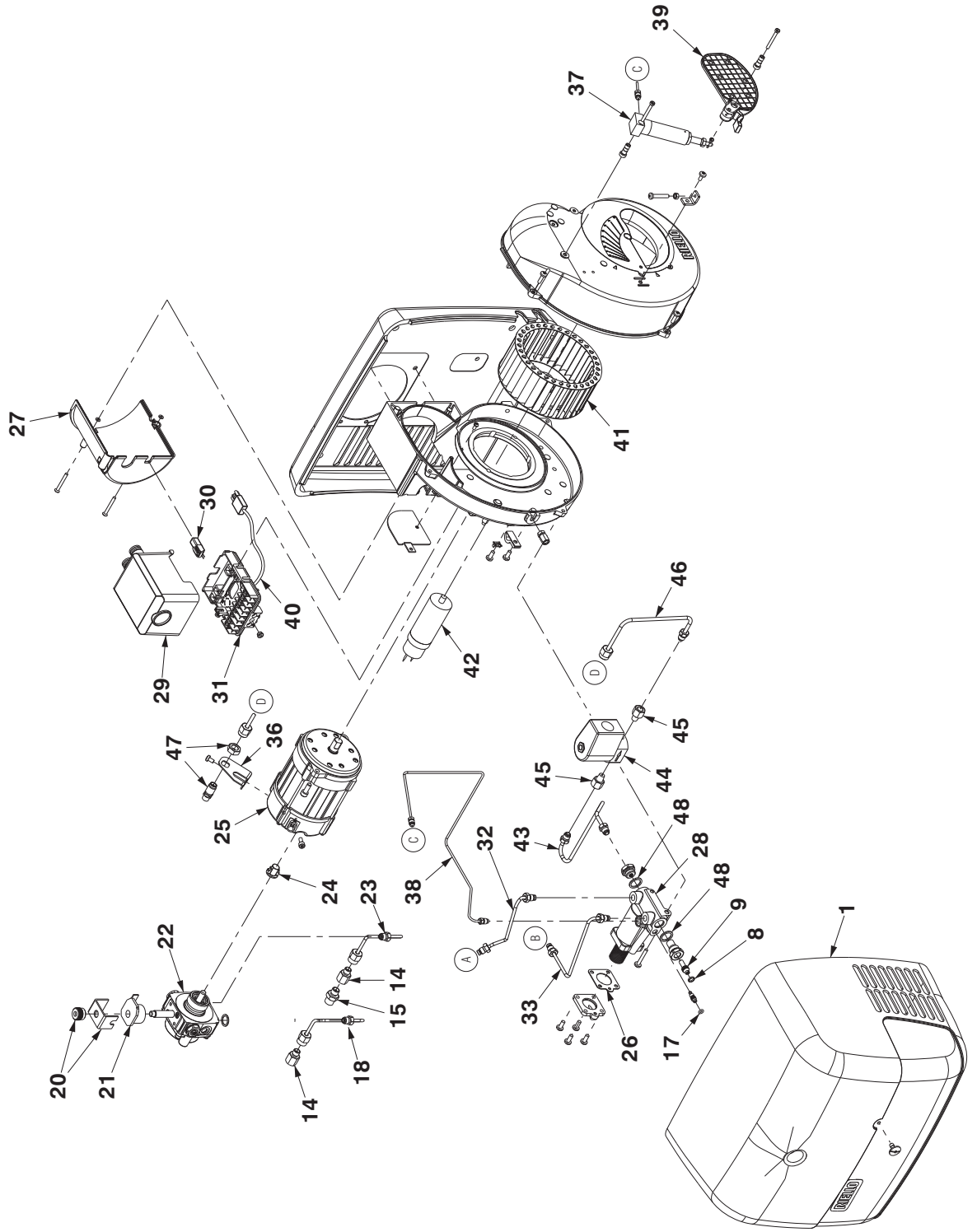
## BODY PANELS

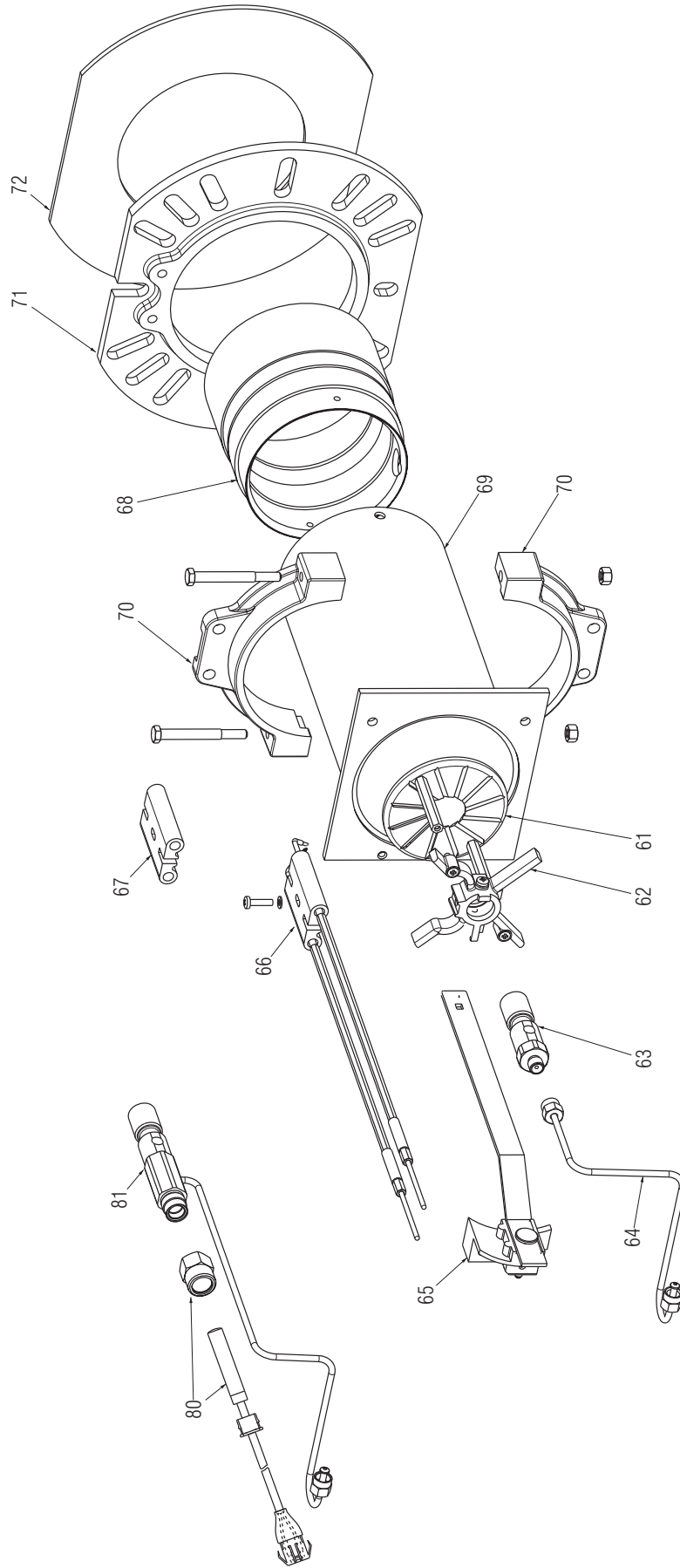


| <u>P/N</u> | <u>DESCRIPTION</u>           |
|------------|------------------------------|
| FV750-840  | LID                          |
| FV750-824  | RIGHT SIDE CENTRE PANEL      |
| FV750-823  | LEFT SIDE CENTRE PANEL       |
| FV750-828  | RIGHT SIDE FRONT PANEL       |
| FV750-827  | LEFT SIDE FRONT PANEL -INLET |
| FV750-835  | LEFT SIDE REAR PANEL         |
| FV750-834  | RIGHT SIDE REAR PANEL        |
| FV750-837  | REAR ACCESS DOOR             |
| FV750-829  | FRONT OUTLET PANEL           |



F-20 OIL FIRED BURNER - PARTS DIAGRAM





| <b>RIELLO BURNER F20 - PARTS LIST DIAGRAM</b> |                    |                                      |
|---|--------------------|--------------------------------------|
| <b>N#</b>                                     | <b>PART NUMBER</b> | <b>DESCRIPTION</b>                   |
| 1   | FV-20137281-OIL    | PLASTIC BURNER BACK COVER C/W LABELS |
| 8   | FVO-3007028        | O - RING                             |
| 9   | FVO-3007583        | REGULATOR                            |
| 14  | FVO-3005847        | CONNECTOR                            |
| 15  | FVO-3006571        | CONNECTOR                            |
| 18  | FVO-20137291       | PIPE CONNECTOR                       |
| 19  | FVO-3002278        | BLEEDER SCREW                        |
| 20  | FVO-3006553        | COIL U-BRACKET AND KNURLED NUT       |
| 21  | FVO-3002280        | PUMP COIL                            |
| 22  | FVO-3007806        | PUMP                                 |
| 23  | FVO-20137289       | PIPE CONNECTOR                       |
| 24  | FVO-3000443        | PUMP DRIVE KEY                       |
| 25  | FVO-3005845        | BURNER MOTOR                         |
| 27  | FVO-3005854        | AIR TUBE COVER                       |
| 28  | FVO-3006500        | START DELAY DEVICE                   |
| 29  | FVO-C700-1029      | PRIMARY CONTROL BOX                  |
| 30  | FVO-20132573       | PHOTO CELL                           |
| 31  | FVO-3002278        | SUB-BASE FOR PRIMARY CONTROL BOX     |
| 32  | FVO-3005809        | OIL PRESSURE TUBE                    |
| 33  | FVO-3005808        | OIL RETURN TUBE                      |
| 37  | FVO-3006499        | HYDRAULIC JACK                       |
| 39  | FVO-3000645        | HYDRAULIC AIR SHUTTER                |
| 40  | FVO-20136491       | PRE-HEATER                           |
| 41  | FVO-3005799        | BURNER FAN                           |
| 42  | FVO-20087024       | BURNER CAPACITOR                     |
| 44  | FVO-3020299        | SOLENOID VALVE                       |
| 45  | FVO-3020304        | ADAPTER                              |
| 46  | FVO-3020301        | OIL LINE                             |
| 61  | FVO-3005897        | TURBOLATOR DISK                      |
| 62  | FVO-3005896        | ELECTRODE SUPPORT                    |
| 65  | FVO-3005901        | REGULATOR ASSEMBLY                   |
| 66  | FVO-3005903        | ELECTRODE ASSEMBLY                   |
| 67  | FVO-3005869        | ELECTRODE PORCELAIN                  |
| 68  | FVO-3005894        | END CONE                             |
| 69  | FVO-3005893        | LONG AIR TUBE                        |
| 70  | FVO-3005849        | SEMI FLANGE                          |
| 71  | FVO-3005851        | MOUNTING FLANGE                      |
| 72  | FVO-3005852        | MOUNTING GASKET                      |
| 80  | FVO-20136491       | PRE-HEATER                           |
| 81  | FVO-20022558       | NOZZLE ADAPTER FOR PRE-HEATER        |



26 Benfield Drive, St.Catharines Ontario Canada  
 905-685-4243  
 12949 Eagle Creek Parkway, Savage MN USA  
 866-266-2484

# PARTS LIST FOR FVO-750 SERIES

| Part Number | Part Description   |  |
|-------------|--|--|
| FV-701      | 7.5 HP PRIMARY FAN MOTOR                                   |  |
| FV-702      | BLOWER ASSEMBLY  |  |
| FV-703      | 15 HP VFD  |  |
| FV-704      | 750VA TRANSFORMER  |  |
| FV-705      | SS HEAT EXCHANGER  |  |
| FV-706      | HIGH LIMIT (OUTLET) 250F                                   |  |
| FV-707      | HIGH LIMIT (REAR) 200F                                     |  |
| FV-708      | 3.5 AMP CLASS CC FUSE (TWO PER HEATER)                     |  |
| FV-709      | 2 POLE CLASS CC FUSE HOLDER                                |  |
| FV-710      | (ON) DELAY TIMER - PRIOR TO 2014                           |  |
| FV-710A     | 8 PIN BASE FOR (ON) DELAY TIMER - PRIOR TO 2014            |  |
| FV-711      | (OFF) DELAY TIMER - PRIOR TO 2014                          |  |
| FV-711A     | 11 PIN BASE FOR (OFF) DELAY TIMER - PRIOR TO 2014          |  |
| FV-712      | 3 POSITION SWITCH (MANUAL-OFF-THERMOSTAT)                  |  |
| FV-410      | GREEN (POWER ON) LIGHT                                     |  |
| FV-411      | RED (BURNER LOCK OUT) LIGHT                                |  |
| FV-414B     | THERMOSTAT RECEPTACLE                                      |  |
| FVO-713     | RIELLO BURNER (OIL) F20                                    |  |
| FVO-713A    | 10-1/2" TUBE FOR F20 BURNER                                |  |
| FV-714      | GROUND LUG   |  |
| FV-715      | 2PDT RELAY 120V, 10 AMP (TWO PER HEATER) - PRIOR TO 2014   |  |
| FV-716      | RELAY SOCKET FOR (FV-715) (TWO PER HEATER) - PRIOR TO 2014 |  |
| FVO-418     | FUEL FILTER (COMPLETE)                                     |  |
| FVO-419     | FUEL FILTER (INSERT) ONLY                                  |  |
| FV-717      | DIN RAIL MOUNT TERMINAL BLOCK (FIVE PER HEATER)            |  |
| FV-718      | DIN RAIL MOUNT TERMINAL BLOCK END                          |  |
| FV-719      | END STOP FOR DIN RAIL                                      |  |
| FV-720      | 7.5 HP CONTACTOR (TWO PER HEATER)                          |  |
| FV-721      | AUXILARY CONTACT BLOCK                                     |  |
| FV-722      | DIN RAIL MOUNT 15AMP BREAKER                               |  |
| FV-723      | MOUNTED ELECTRICAL ENCLOSURE                               |  |
| FV-724      | BACK PANEL FOR ELECTRICAL ENCLOSURE                        |  |

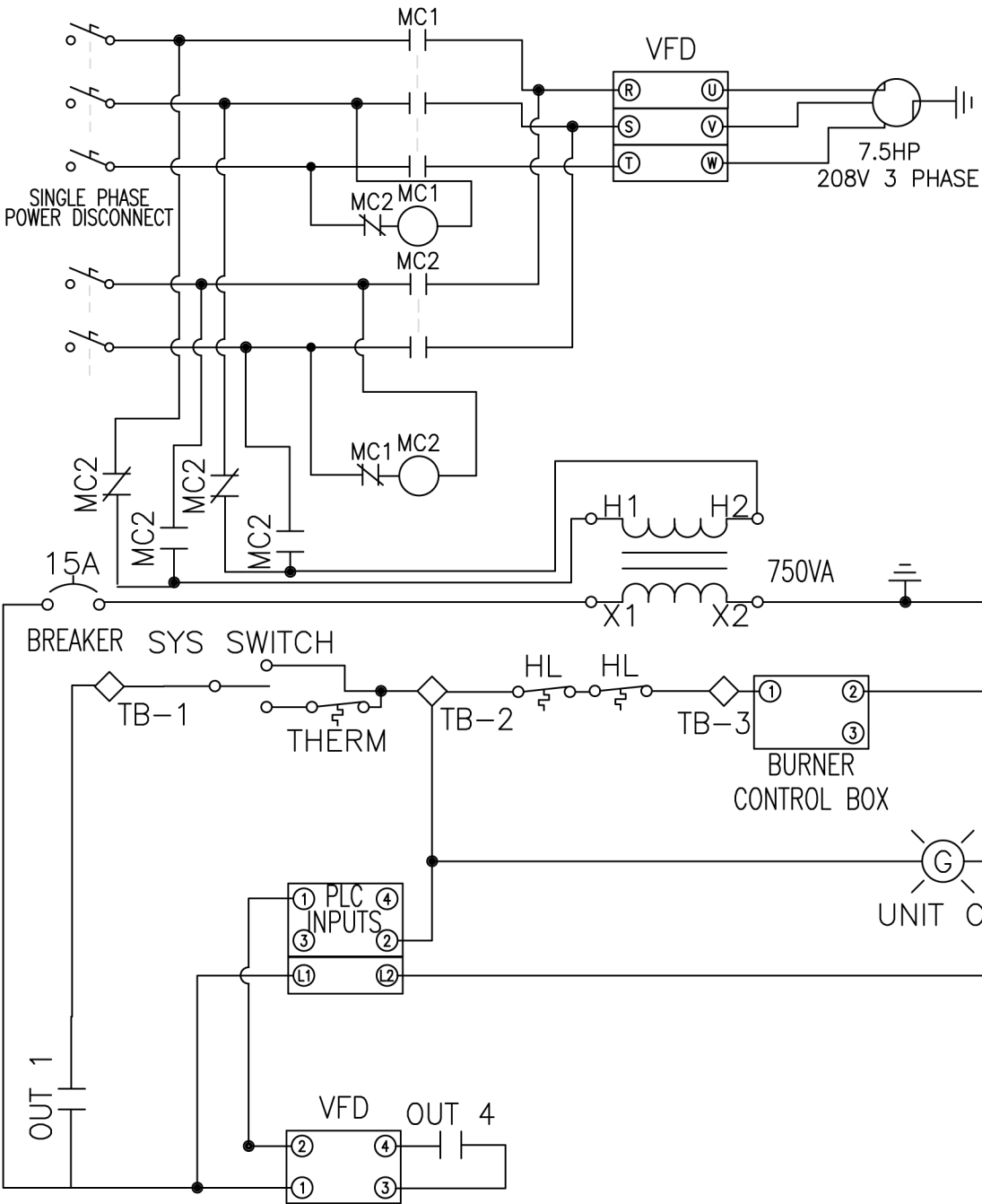
|         |   |  |
|---------|---|--|
| FV-725  | REAR DOOR LATCH (INCLUDES MOUNTS & RAILS)     |  |
| FV-726  | DOOR HINGE (TWO PER HEATER)                   |  |
| FV-727  | 3 PH 30AMP PLUG END                           |  |
| FV-728  | 1 PH 50AMP PLUG END                           |  |
| FV-729  | 3 PH 30AMP RECEPTACLE (COVER INCLUDED)        |  |
| FV-730  | 1 PH 50AMP RECEPTACLE                         |  |
| FV-730A | 1 PH 50AMP RECEPTACLE COVER                   |  |
| FV-731  | 3 PH (ON/OFF) DISCONNECT BOX                  |  |
| FV-732  | 1 PH (ON/OFF) DISCONNECT BOX                  |  |
| FV-733  | 4.50 X 60W OIL NOZZLE                         |  |
| FV-734  | POWER RELAY                                   |  |
| FVO-TLS | TIGERLOOP SYSTEM C/W FILTER                   |  |
| FVO-734 | TIGER LOOP OIL DE-AERATOR                     |  |
| FVO-735 | FUEL SUPPLY LINE (INLET TO TIGERLOOP) 10-1/2" |  |
| FVO-736 | FUEL LINE (TIGERLOOP TO FILTER) 8"            |  |
| FVO-737 | FUEL LINE (FILTER TO BURNER) 19"              |  |
| FVO-738 | FUEL RETURN LINE (BURNER TO TIGERLOOP) 19"    |  |
| FV-446  | SIGHT GLASS C/W FIBER GASKET                  |  |
| FV-447  | SIGHT GLASS WASHER                            |  |
| 5048-6D | FUEL SUPPLY & HEAT EXCHANGER DRAIN VALVE      |  |

| <b>ACCESSORIES</b> |   |  |
|--------------------|---|--|
| FV-HDG16           | 16" X 25-FT HITEX OUTLET DUCTING        |  |
| FV-HDV16           | 16" X 25FT VENTFLEX INLET DUCTING       |  |
| FV-THB             | THERMOSTAT C/W 25 FT CORD/MALE PLUG END |  |
| FV-THB (15M)       | THERMOSTAT C/W 50 FT CORD/MALE PLUG END |  |
| FV-VKA             | 8" X 2.5FT C-VENT C/W RAIN CAP          |  |
| FVO-C7001001       | EMERGENCY SERVICE KIT                   |  |
| FVO-C7050010       | VACUUM & PRESSURE TESTER MANIFOLD       |  |

REVISIONS

THREE PHASE  
POWER DISCONNECT

SINGLE PHASE  
POWER DISCONNECT



FLAGRO INDIRECT HEATER

FVO-750

|              |              |                        |             |
|--------------|--------------|------------------------|-------------|
| SIZE<br>N/A  | FSCM NO      | DRAWING NUMBER<br>0001 | REV<br>1.03 |
| SCALE<br>N/A | SHEET<br>N/A |                        |             |