

FVO-200RC42 | FVO-400 | FVO-400RC: Wheel and Axle Replacement

Background

On the models listed below, there has been an increase in reports of units experiencing failure of the wheels (FV-403) in the field. If damage to the wheel or wheel hub is noted, both wheels should be replaced with the new wheels (FV-403B x 2). The changing of the wheels will also require a new axle (FVO-440B), as well as two new cotter pins (PICPZI182 x 2).

Affected Units:

- FVO-200RC42 SERIAL NUMBER 872-1042
- FVO-400 SERIAL NUMBER 739-2239
- FVO-400RC SERIAL NUMBER 4595-5925

Time required: 10 minutes (excluding set up time and retrieving unit from the yard)

Parts required:

PART NUMBER	FVO-200RC42/-400/-400RC WHEEL/AXLE KIT: FV-403B.RETROKIT	QUANTITY
FVO-440B	AXLE FOR FVO-400 (POLY TANK) >24	1
FV-403B	16" FLAT FREE HEAVY DUTY HUB >24	2
PICPZI182	1/8 X 2 PIN COTTER ZINC	2

Tools required:

SIZE	DESCRIPTION	QUANTITY
STANDARD	HAMMER	1
STANDARD	NEEDLE-NOSE PLIER	2



SERVICE INSTRUCTIONS BEGIN BELOW. BEFORE STARTING THIS PROCEDURE, PERFORM A TAKE-10 AND MAKE SURE THAT THE UNIT IS TURNED OFF AND THAT THE POWER IS DISCONNECTED.

Replacing the Wheels and Axle

1. Using the forklift pockets on the unit, lift the unit up to a comfortable working height. Leave a gap between the forklift mast and the unit to allow for the future removal of the axle toward the forklift.



2. Start with the wheel to the farside of the forklift (the far wheel). Using the needle-nose pliers, straighten out the cotter pin and remove the pin from the axle. Remove the $\frac{3}{4}$ " washer from the outside of the wheel and save it for installation of the new wheel.



3. Remove the far wheel from the axle and save the $\frac{3}{4}$ " washer from behind the wheel.

- 4. The axle and the wheel on the inside of the forklift (the close wheel) should now slide out completely toward the forklift. This will result in the full removal of both original wheels and the original axle.

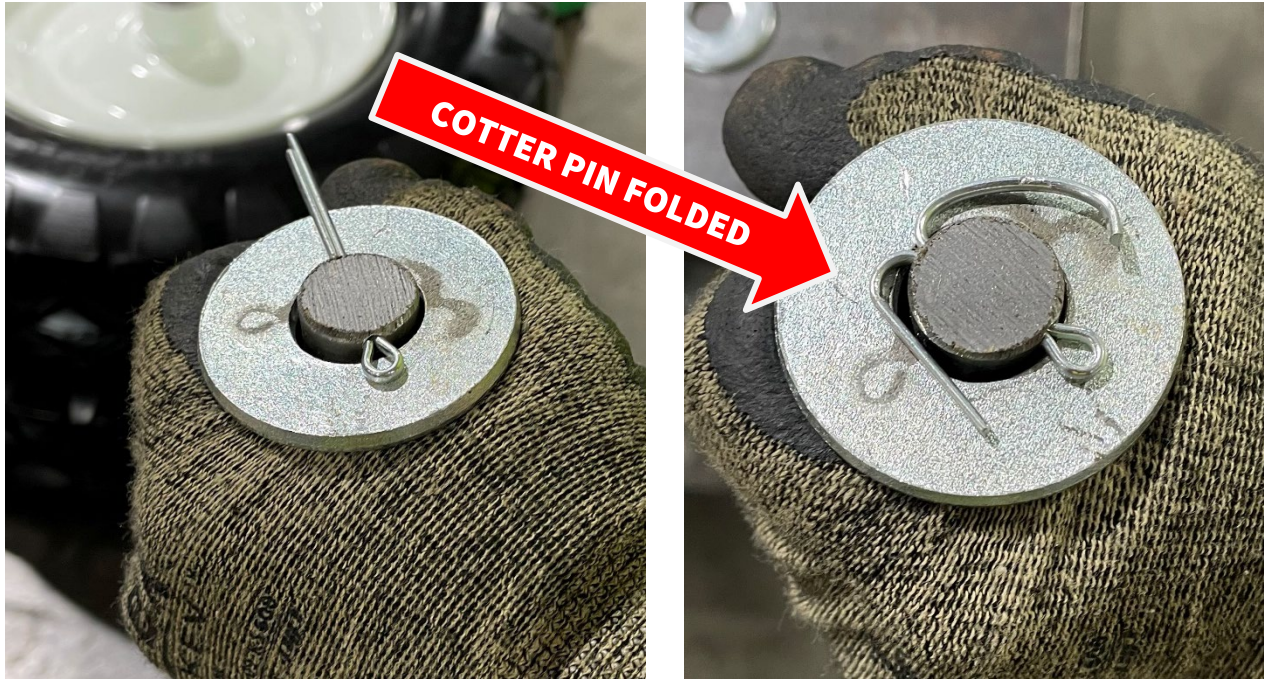
NOTE: A hammer may be needed to start getting the axle to slide through the axle housing.



- 5. **NOTE:** The new axle will be longer than the original axle.



- Slide one of the previously removed $\frac{3}{4}$ " washers onto the new axle. Insert a new cotter pin into the end of the axle and use the needle-nose pliers to fold the cotter pin over. This will keep the washer (and wheel) from sliding off the end of the axle.



- Slide a new wheel onto the axle shaft, all the way until it reaches the washer and cotter pin end.

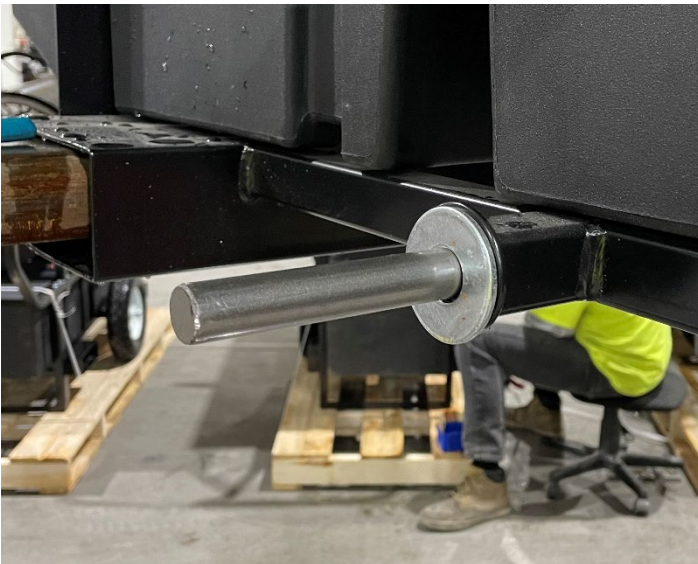
IMPORTANT: Make sure to position the zerk grease fitting on each wheel facing the outside end of the axle.



8. Slide another 3/4" washer onto the axle resting it against the back side of the new wheel.



9. Slide the axle (with close wheel attached) into the unit, from the forklift side. The close wheel will now be installed on the forklift side of the unit, with the bare axle protruding from the side of the unit furthest from the forklift.



10. Slide a 3/4" washer onto the axle on the far side of the axle. Slide on the far wheel (with the grease fitting facing out).

11. Add a $\frac{3}{4}$ " washer to the end of the axle and insert the cotter pin on the axle BUT DO NOT FOLD THE PIN OVER.



12. Gently move the wheel in and out on the axle looking for excessive play between the wheel and the frame of the unit. If there is excessive play, insert a second $\frac{3}{4}$ " washer behind the wheel.

IMPORTANT: The wheels must display some play against the frame of the unit and a wheel should NEVER BE WEDGED TIGHTLY between the unit frame and the cotter pin.

13. Fold the cotter pin over using the needle-nose pliers.

14. The wheels are now replaced and the unit can be placed on the floor and returned to service.